



AFTER THE UNSPEAKABLE,  
WE SPEAK HOPE.



DOING THE MOST GOOD



# **EMERGENCY DISASTER SERVICES INTERNATIONAL TO LOCAL**

**LEARNING IN RETIREMENT  
MARCH 2019**



# WHO ARE WE?



- **THE SALVATION ARMY IS A CHRISTIAN DENOMINATION**
- **PRESENT IN 128 COUNTRIES**
- **BEGAN IN LONDON, ENGLAND IN 1865**
- **CAME TO USA ON MARCH 10 1880**
- **CAME TO JC IN AUG 1922**



















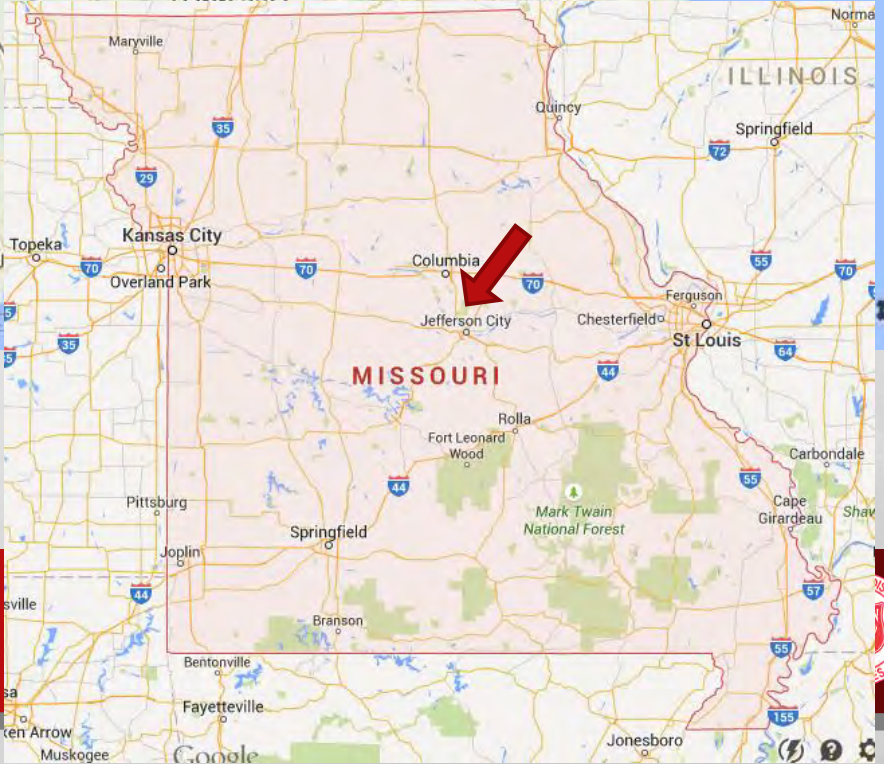












# DISASTERS



- **HELP IN DISASTERS AROUND THE WORLD**
- **HURRICANE MARIA – OCT 2017**
- **IN IN PUERTO RICO SERVED OVER 1.2M PEOPLE**
- **100K MEALS PER DAY**





# The Call=Chronicle=Examiner

SAN FRANCISCO, THURSDAY, APRIL 19, 1906.

## EARTHQUAKE AND FIRE: SAN FRANCISCO IN RUINS

DEATH AND DESTRUCTION HAVE BEEN THE FATE OF SAN FRANCISCO. SHAKEN BY A TREMOR AT 8:15 O'CLOCK YESTERDAY MORNING, THE SHOCK LASTING 45 SECONDS, AND SCORCHED BY FLAMES THAT RAGED DIAMETRICALLY IN ALL DIRECTIONS, THE CITY IS A MASS OF SMOLDERING RUINS. AT SIX O'CLOCK LAST EVENING THE FLAMES SEEMINGLY PLAYING WITH INCREASED VIGOR, THREATENED TO DESTROY SUCH SECTIONS AS THEIR FURY HAD SPARED DURING THE EARLIER PORTION OF THE DAY. BUILDING THEIR PATH IN A TRIANGULAR CURVE FROM THE START IN THE EARLY MORNING, THEY JOCKETED AS THE DAY WANE, LEFT THE BUSINESS SECTION, WHICH THEY HAD ENTIRELY DEVASTATED, AND SCIPPED IN A DOZEN DIRECTIONS TO THE RESIDENCE PORTIONS. AS NIGHT FELL THEY HAD MADE THEIR WAY OVER INTO THE NORTH BEACH SECTION AND SPENDING AHEAD TO THE SOUTH THEY REACHED OUT ALONG THE SHIPPING SECTION DOWN THE BAY SHORE, OVER THE HILLS AND ACROSS TOWARD THIRD AND FORTYSECOND STREETS. WAREHOUSES, WHOLESALE HOUSES AND MANUFACTURING CONCERNS FELL IN THEIR PATH. THIS COMPLETED THE DESTRUCTION OF THE ENTIRE DISTRICT KNOWN AS THE "SOUTH OF MARKET STREET" HOW FAR THEY ARE REACHING TO THE SOUTH ACROSS THE CHANNEL CANNOT BE TOLD AS THIS PART OF THE CITY IS SHUT OFF FROM SAN FRANCISCO PAPERS.

AFTER DARK NEARLY THOUSANDS OF THE HOMELESS WERE MAKING THEIR WAY WITH THEIR BLANKETS AND SCANT PROVISIONS TO GOLDEN GATE PARK AND THE BEACH TO FIND SHELTER. THOSE IN THE HOMES ON THE HILLS JUST NORTH OF THE HAYES VALLEY WRECKED SECTION FILED THEIR BELONGINGS IN THE STREETS AND EXPRESS WAGONS AND AUTOMOBILES WERE HAULING THE THINGS AWAY TO THE SPARSELY SETTLED REGIONS. EVERYBODY IN SAN FRANCISCO IS PREPARED TO LEAVE THE CITY, FOR THE BELIEF IS FIRM THAT SAN FRANCISCO WILL BE TOTALLY DESTROYED.



# OUR BEGINNINGS...

## THE 1906 SAN FRANCISCO EARTHQUAKE









# IN EVERY DISASTER THERE IS A INCIDENT COMMAND STRUCTURE

**Incident  
Commander**

**Operations Chief**

**Logistics Chief**

**Finance and Administration Chief**

**Safety Officer / Canteen Coordinator**

**Public Information Officer**

**Planning Chief**

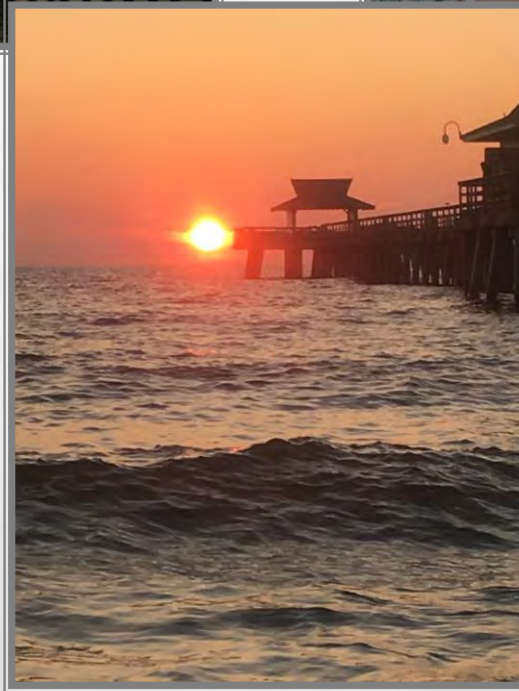
**Liaison Officer**

**Emotional & Spiritual Care Chief**









# **NAPLES, FLORIDA**

**PARADISE ON THE GULF**







## **THE MIGHTY MIDLAND TEAM**

**LT. CHRISTOPHER WHITE, CAPTAIN LINDA MCCORMICK, MARGO FRANZ,  
MAJOR NANCY HOLLOWAY AND MAJOR CHARLES PINKSTON**





# COMMAND POST





“



# NAPLES BOUNCES BACK

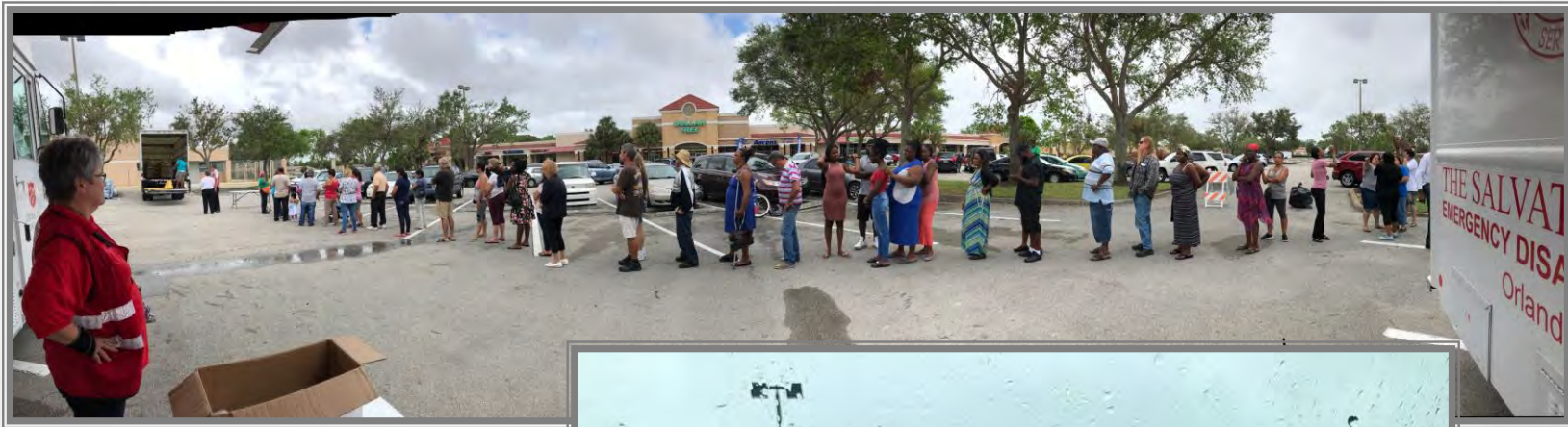




# FIXED FEEDING SITES







**FIXED FEEDING**





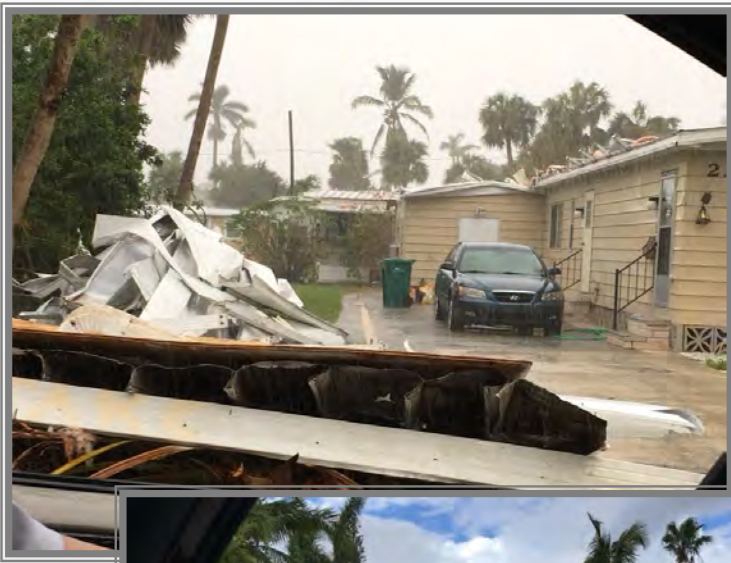


# **MOBILE HOME PARKS**

**HENDERSON CREEK PARK, THE HITCHING POST,  
IMPERIAL WILDERNESS, SUNNY ACRES**



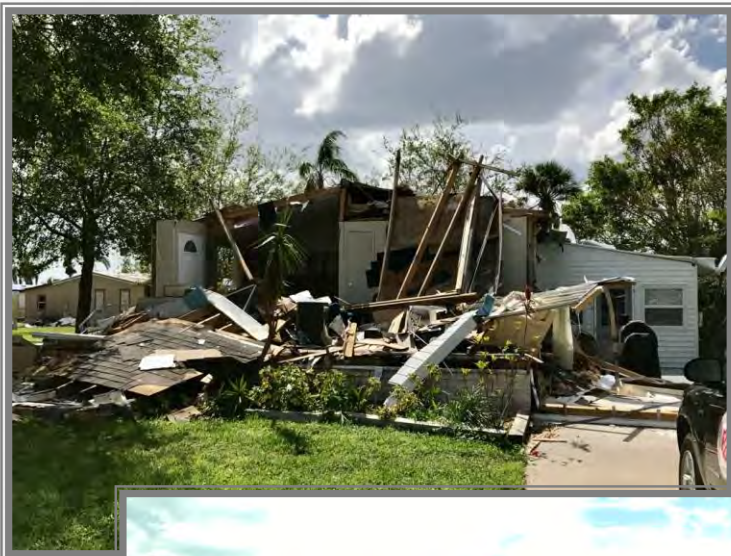




# MOBILE HOME PARKS







# MOBILE HOME PARKS







**...OUR RESPONSE**





# CHOKOLOSKEE

**“THE CLOSEST THING TO LIVING IN THE CARIBBEAN  
WITHOUT LEAVING THE CONTINENTAL UNITED STATES”**







**CHOKOLOSKEE**







**CHOKOLOSKEE**





“



”

# STORY

## THE SECRET LIVES OF PETS



# DISASTERS IN JEFFERSON CITY

RESPONDING IN OUR HOME TOWN





# THE GREAT FLOOD OF 1993



# OPERATION NOAH'S ARK



- **MAY-OCT 1993 MISSOURI AND MISSISSIPPI RIVERS ROSE 15 FEET**
- **320,000 SQUARE MILES AFFECTED**
- **\$15 BILLION IN DAMAGES (APPROX. \$26 BILLION IN 2019 DOLLARS)**
- **WIPED OUT CEDAR CITY**





# LOCAL DISASTERS



- **PARTNER WITH THE RED CROSS**
- **THEY ATTEND THE FIRE / GIVE OUT REFERRAL FORMS**
- **THIS GIVES ACCESS TO OUR RESOURCES**



# FURNITURE AND CLOTHING

- **GET A FURNITURE VOUCHER FOR ITEMS WHEN THEY MOVE INTO A NEW PLACE**
- **GET CLOTHING VOUCHER TO HELP REPLACE WHAT THEY HAVE LOST / SMOKY CLOTHES**





# HOT COTS AND COLD COTS



- **OPERATE A WARMING STATION WHEN 32°F OR BELOW**
- **COLD COTS AT 35°F OR BELOW**
- **OPERATE A COOLING STATION WHEN 85°F OR ABOVE**
- **HOT COTS AT 90°F OR ABOVE**



# BEAT THE HEAT



- **IN THE SUMMER WE PARTNER WITH WESTLAKES AND KOMU**
- **NEW AND USED FANS GO PRIMARILY TO THOSE WITH CHILDREN AND SENIORS**
- **87 NEW FANS IN 2018**





# EVERYDAY DISASTERS



- **PEOPLE HAVE DISASTERS EVERY DAY**
- **WE ARE THERE FOR THEM AS WELL**
  - **FOOD PANTRY**
  - **HOMELESS SHELTER**
  - **MEAL PROGRAM**
  - **LAUNDRY FACILITIES**



# LOOKING TO THE FUTURE...

- **HAVE SUPPLIES FOR 60-70 PEOPLE TO USE THE CHURCH GYM AS AN EMERGENCY SHELTER**
- **HAVE A TEAM OF 9 EDS TRAINED VOLUNTEERS**
- **FLOOD RELIEF KITS FROM JC ROTARY WEST CLUB**





# LOOKING TO THE FUTURE...

- **COLUMBIA, MO LOOKING TO GET SALVATION ARMY CANTEEN FOR THE MID-MO AREA**
  - **RESPOND TO FIRES**
  - **SERVE FIRST RESPONDERS**
  - **PROVIDE ESC TEAMS IN CRISIS SITUATIONS**





## **1 PETER 4:8-11 (NIV)**

**<sup>8</sup> ABOVE ALL, LOVE EACH OTHER DEEPLY, BECAUSE LOVE COVERS OVER A MULTITUDE OF SINS. <sup>9</sup> OFFER HOSPITALITY TO ONE ANOTHER WITHOUT GRUMBLING. <sup>10</sup> EACH OF YOU SHOULD USE WHATEVER GIFT YOU HAVE RECEIVED TO SERVE OTHERS, AS FAITHFUL STEWARDS OF GOD'S GRACE IN ITS VARIOUS FORMS. <sup>11</sup> IF ANYONE SPEAKS, THEY SHOULD DO SO AS ONE WHO SPEAKS THE VERY WORDS OF GOD. IF ANYONE SERVES, THEY SHOULD DO SO WITH THE STRENGTH GOD PROVIDES, SO THAT IN ALL THINGS GOD MAY BE PRAISED THROUGH JESUS CHRIST. TO HIM BE THE GLORY AND THE POWER FOR EVER AND EVER. AMEN.**





**FOR MORE INFORMATION GO TO  
WWW.DISASTER.SALVATIONARMYUSA.ORG**



BE THERE.  
EVEN WHEN YOU CAN'T BE.

Donate now to Hurricane Florence Relief Efforts.  
[helpsalvationarmy.org](https://helpsalvationarmy.org)

