



Technology Serving Seniors



Social Media: Smart Home Automation Lights/Sound & Video/Appliances

Tom Piper & special guests

August 31, 2021



History of Home Automation

Early home automation began with labor-saving machines such as self-contained gas-powered or electric home appliances with the introduction of **electric** power distribution which introduced:

- sewing machines (1755)
- washing machines (1904)
- dishwashers (1850)
- refrigerators (1913)
- water heaters (1889)
- clothes dryers (1937)

Definition: **Home automation** (sometimes known as “domotics”) creates a wide range of technologies that reduce human intervention in processes for a home, making it a smart home.

A home automation system will **monitor** and **control** home attributes such as doors, lighting, climate, entertainment, entry access, water, appliances, home security and more.

When connected with the Internet . . .
a home automation system typically connects controlled devices to a central smart home (sometimes called a "gateway").

Smart Home

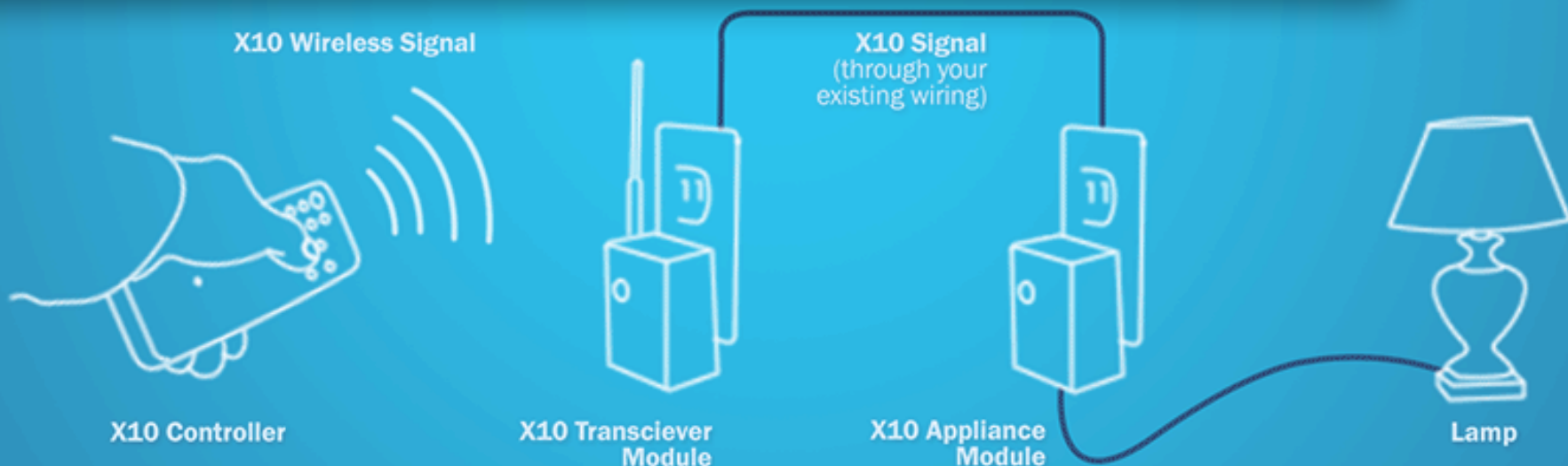


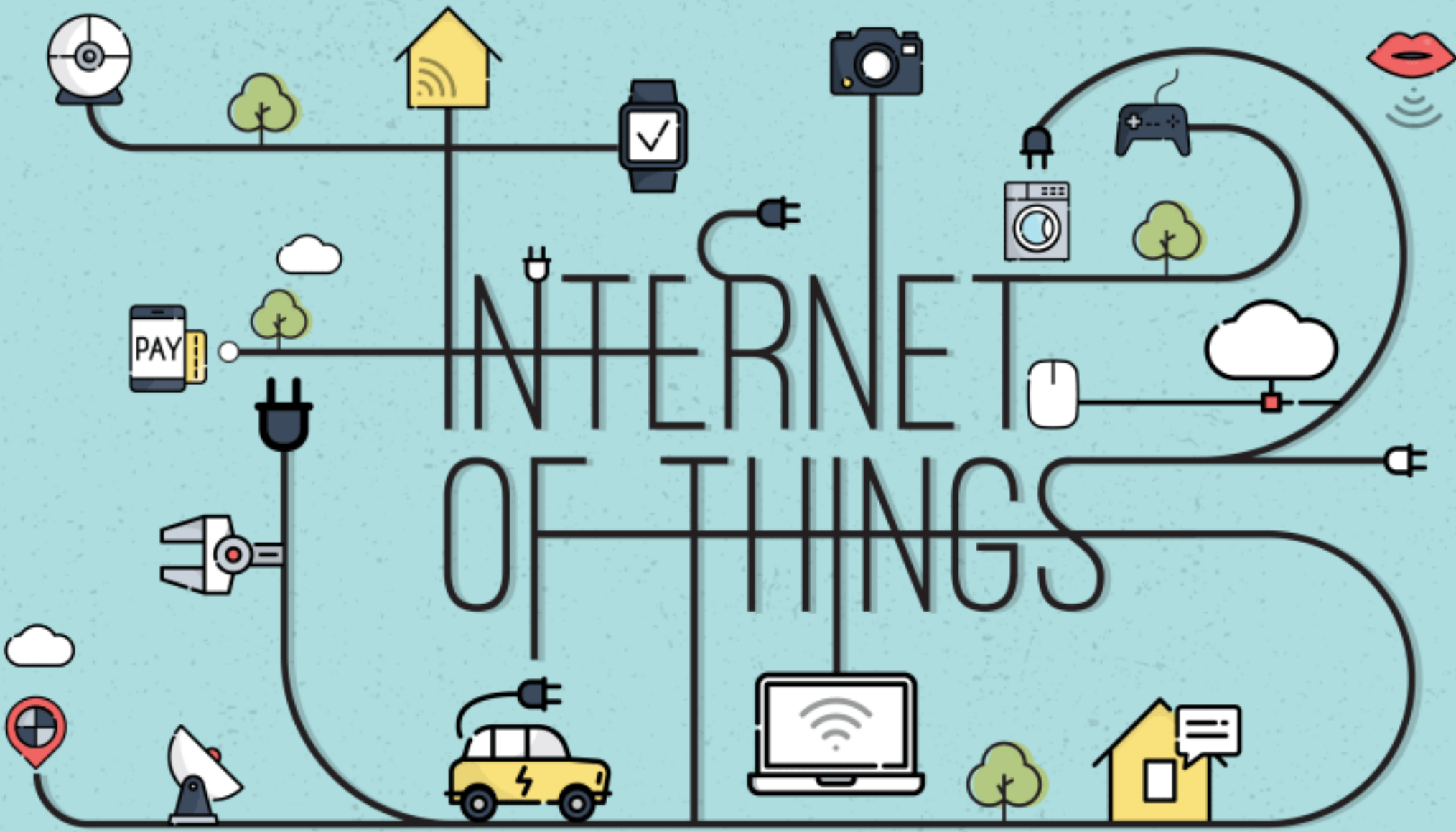
First Home Automation System

In 1975, the first general purpose home automation network technology, **X-10**, was developed as a protocol for electronic devices using electric wiring for signaling and control.



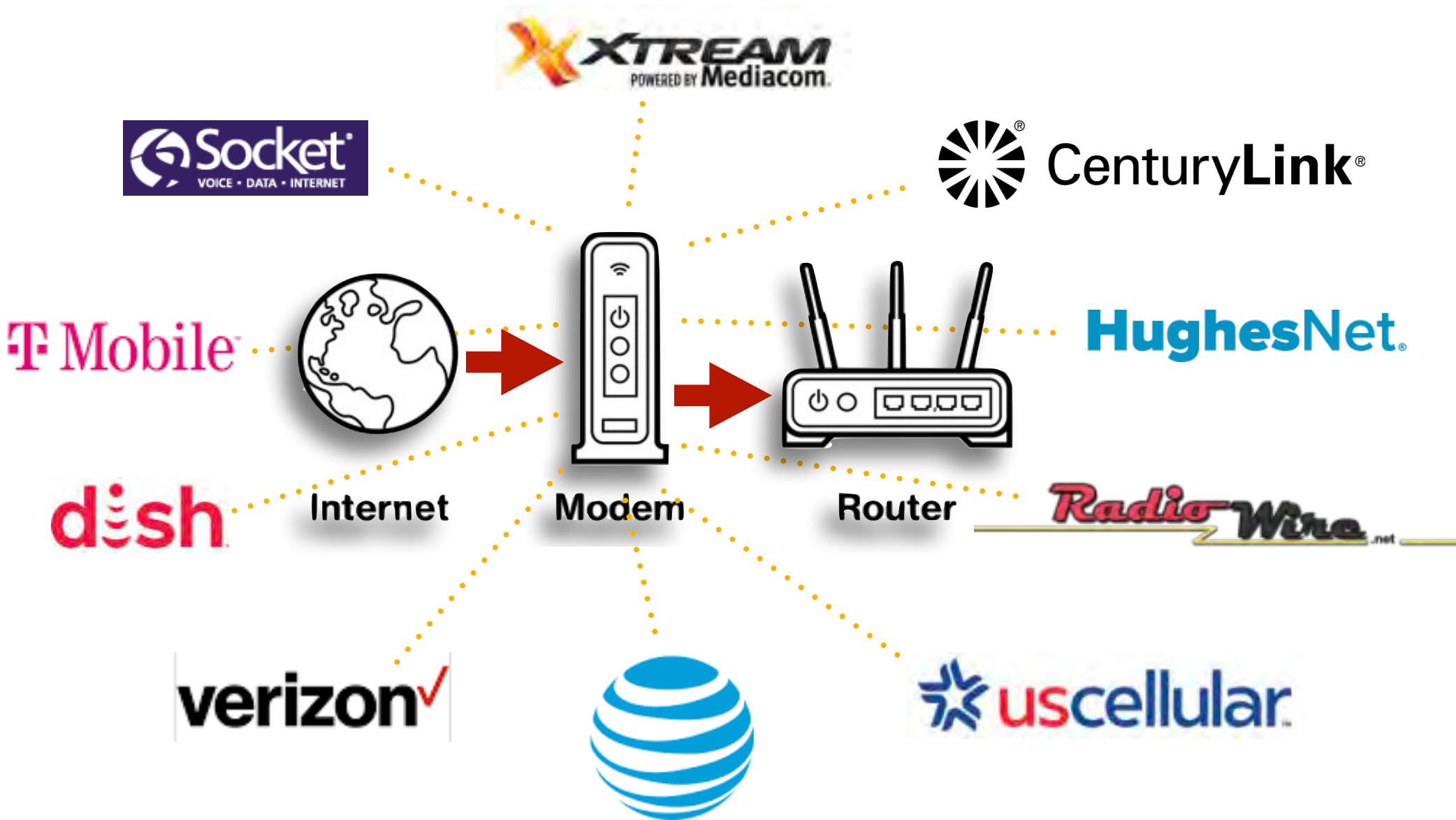
By 1978, X10 products included a 16-channel command console, a lamp module, and an appliance module, followed by the wall switch module and the first X10 timer.





INTERNET
OF THINGS

Internet Connections





Best Wifi Units

Wireless router is a device that performs the functions of a wireless access point to access the Internet and private computer network:

- Single WiFi router
- Mesh Wifi routers

\$99 - \$499



- #1 TP-Link Archer C2300*
- #2 Linksys EA8300 MaxStream*
- #3 ASUS ROG Rapture GT-AC5300*

- #1 Eero*
- #2 Google WiFi*
- #3 Netgear Orbi AC2200 RBK23*



Smart Hub
\$34 - \$199

Router



Core of Home Automation

Smart home hub, known as "smart hub", "gateway", "bridge", "controller", "coordinator" or "router"

a control center for a smart home which enables the components of a smart home to communicate with each other through a central electronic point.



Apple TV 4K



Amazon Echo





are you overwhelmed yet?



Smart Home Device Types

- Lighting Solutions
 - Entertainment Devices
 - Home Appliances
 - Home Utilities
 - Home Cameras
 - Door Locks
 - Garage Door Openers
 - Home Security
 - Voice Recognition
 - Windows & Doors
 - Remote Controls
 - Smart Home Apps
- 

Lighting Solutions



\$10 - \$30

Entertainment



Home Appliances



SmartFridge



SmartMicrowave



SmartBlind



SmartKettle



SmartSocket



SmartToaster



SmartSocket



SmartSocket



SmartOven



SmartDishwasher



SmartElectric Hob



SmartTV



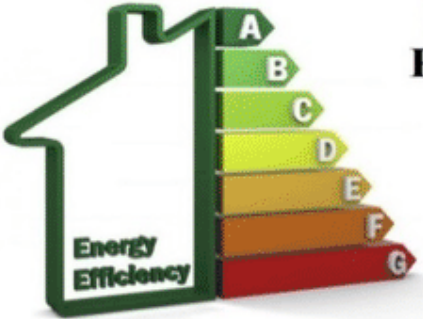
SmartHUB



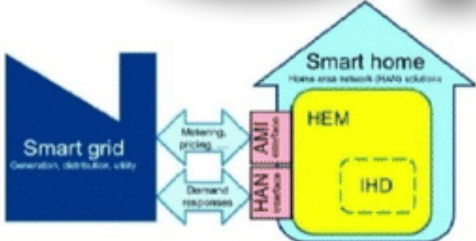
Home Utilities



Renewable Energy Resources



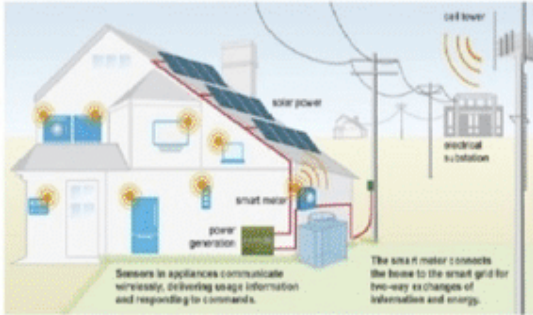
Energy Efficiency



Home Area Network



Power Observation



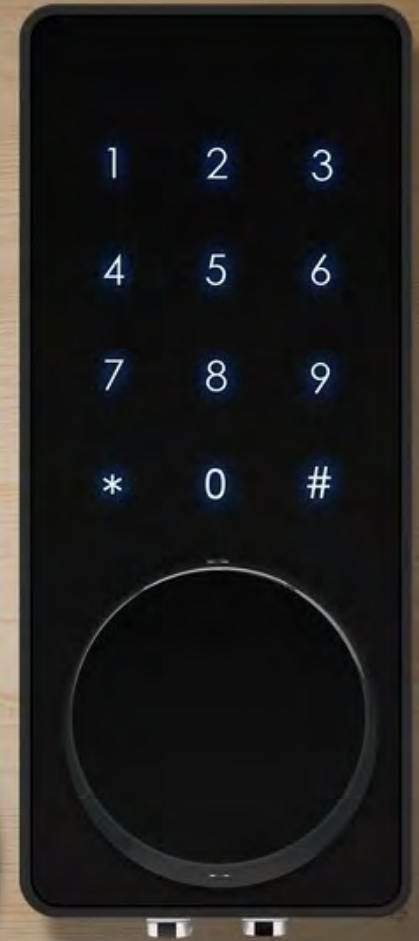
Communication



Electric Vehicles

Door Locks

WYZE BUILT WITH lockin

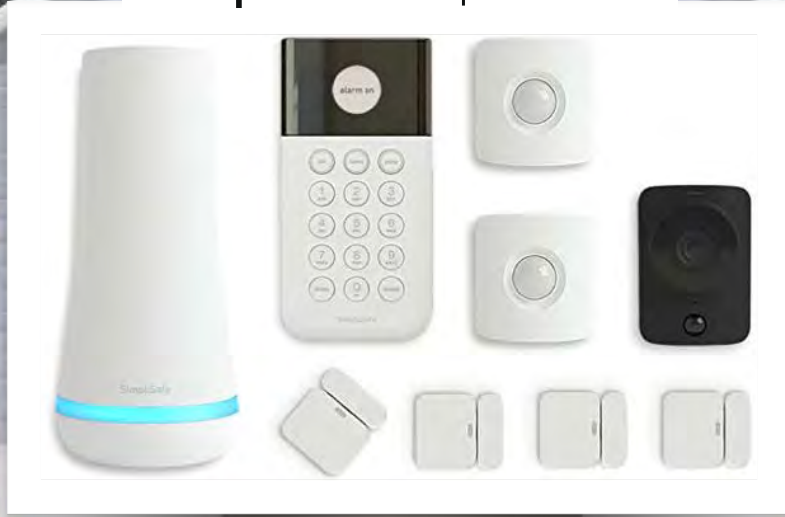


Garage Door Openers





SimpliSafe \$239.99



Home Security

Voice Recognition

amazon

Google

Microsoft



SAMSUNG




amazon alexa

Google

ASSISTANT

 Cortana


Siri

 Bixby

Windows & Doors

WINDOW AND
DOOR SENSOR



BLINDS AND
SHADES



INSYNCTIVE
REMOTE
CONTROL



INSYNCTIVE
GARAGE DOOR
SENSOR



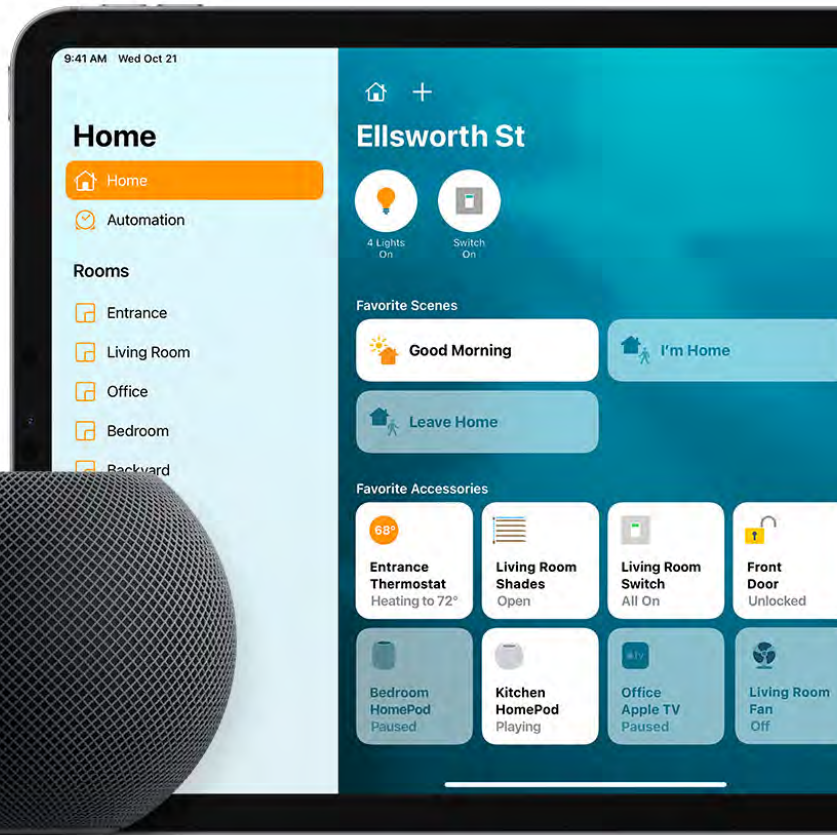
INSYNCTIVE
ENTRY DOOR
DEADBOLT SENSOR



Remote Controls

Amazon Alexa

Apple Home Kit



Smart Home Apps



Recommended Wyze Products





... SO MUCH MORE ...



A Beginner's Guide

- Choose a system: whether that be Alexa, Google Assistant, HomeKit, SmartThings, other.
- Pick a top smart speaker or smart screen to be your main controller.
- Check what the best devices are in each smart home category.
- Start with the basics - lighting, heating, music - build your system around these.
- Get stuck into automations and rules.

<https://www.the-ambient.com/how-to/get-started-with-the-smart-home-199>



Technology Serving Seniors

the End of This Session

What would you like to see in next course???