

Introduction to Honey Bees & Beekeeping

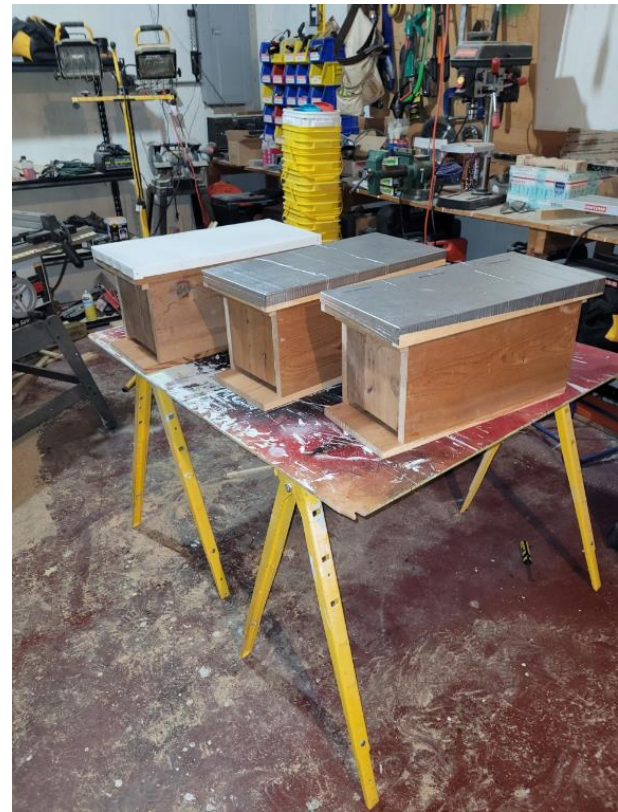
Adam Benne & Gail Severance



Learning in Retirement
March 21, 2024

Getting Bees

- Swarm
 - Capture
 - Trap
- Package
 - Just Bees
- Nuc
 - Small Hive
- Full hive



Types of Hives

- Vertical

- Langstroth
 - Standard
- Warre



- Horizontal

- Top Bar
- Long Langstroth

- Others

- Variations of these



Other Equipment

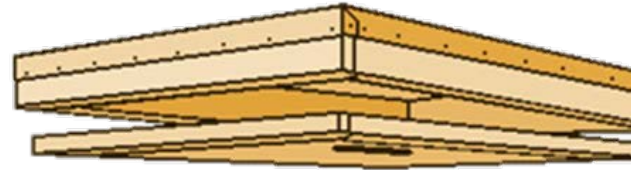
- Veil/Jacket/Suit
- Smoker
- Hive Tool
- Lots of Others



Some of my hives



Outer Cover
Inner Cover



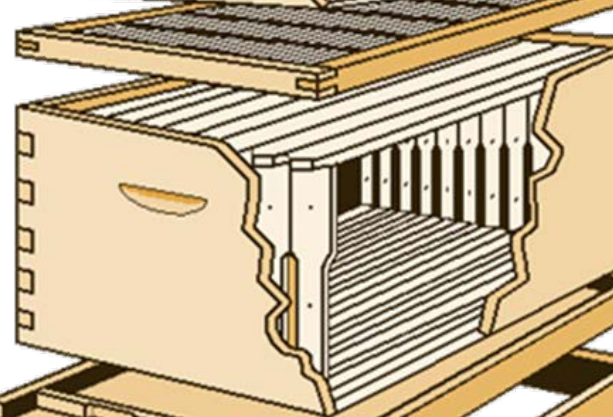
Honey supers



Queen Excluder



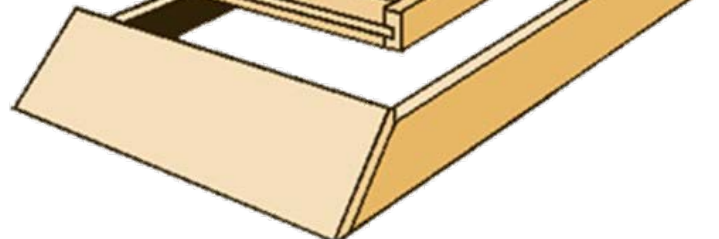
Deep Super



Bottom Board



Stand

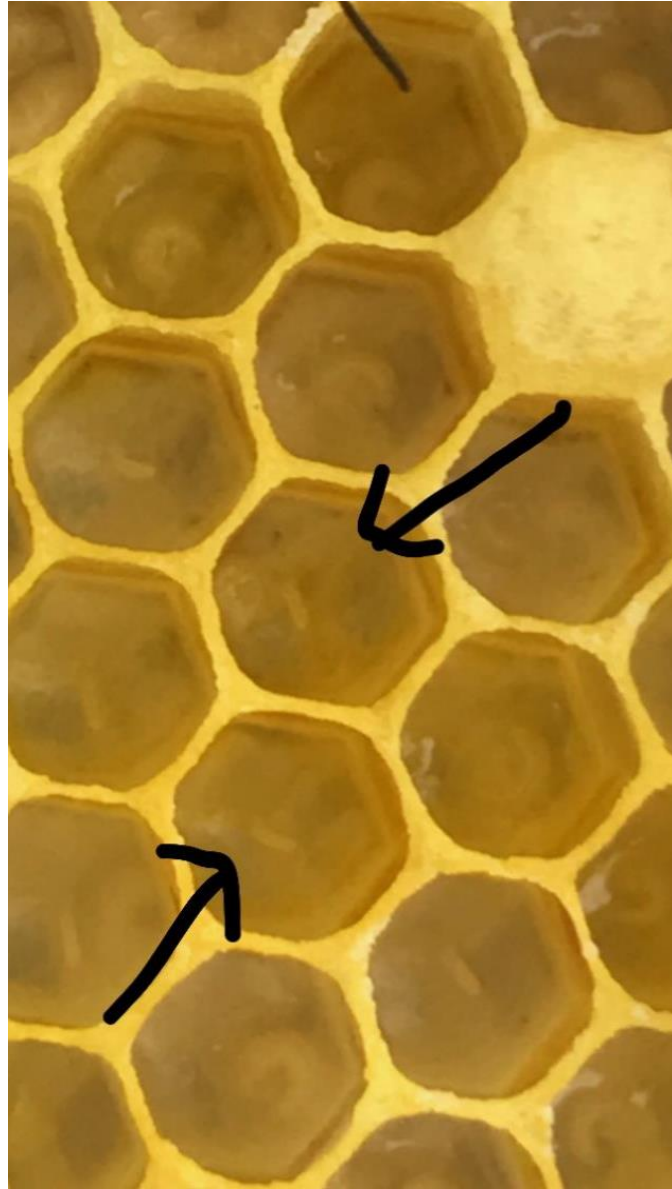


Inspections











This is what
most
beekeepers
work for:

**A
Beautiful
frame of
HONEY!**



Honey Facts

- Colony of 60,000 bees fly 55,000 miles visiting 2 million flowers to collect 1 pound of honey
- A bee produces just 1/12 teaspoon of honey in her 3-5 week lifespan
- “Raw” honey has not been heated (enzymes preserved)
- “Unfiltered” honey is strained but still has pollen
- Honey never spoils – If it crystalizes put in hot water to liquify
- Honey has anti-bacterial properties
- Do not feed honey to infants under 1 year



Benne's Bees
Pure Local Raw
Wildflower

Benne's Bees
Pure Local Raw
Wildflower Honey
0.75 lbs
Bottled by: Adam Benne
Jefferson City, MO



Benne's Bees
LAVENDER LOTION BAR
Ingredients: Beeswax, Mango
... 011

Benne's Bees
Pure Local Raw
Wildflower Honey
8.75 Oz
Bottled by Adam Benne
Jeffersonville, IN 47137

Benne's Bees



Products	
Honey Bear	+8
Honey Bottle	+8
Lotion	+10
Lip Balm	+5
Soap	+2.5
Gift Baskets	+25-40

Pollination

- About 1/3 of the food eaten by Americans is pollinated by bees
- Apples
- Melons
- Cranberries
- Pumpkins
- Almonds
- Cherries
- MANY MORE

Pollination

- Crop pollination – because of flower fidelity
 - Flower fidelity – honey bees visit one type of flower
 - Many crops need to be fertilized by a different variety
- ~\$15 billion added crop value/production
- ~2 million colonies moved to California each year for pollination
- Crop pollination contributes about 10-20 times more agricultural value than total honey and beeswax production



Honey Bee Colonies

- U.S. total - ~2.7 million colonies
 - Honey production - ~126 million pounds
- Missouri total - ~10,500 colonies
 - Honey production - ~650,000 pounds

Honey Bees as Livestock

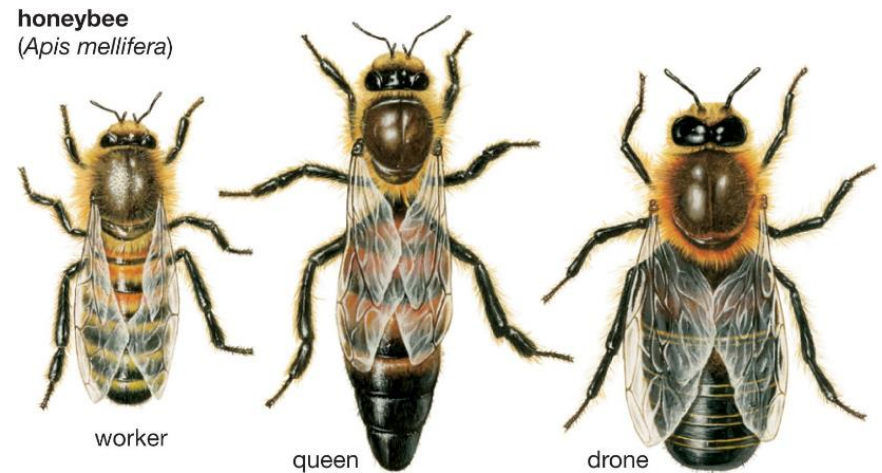
- Management
 - Reproduction/breeding
 - Pests and diseases
 - Sustainability/recovery from loss

3 Castes of Bees in a Colony

- Workers
- Queen
- Drones

Worker

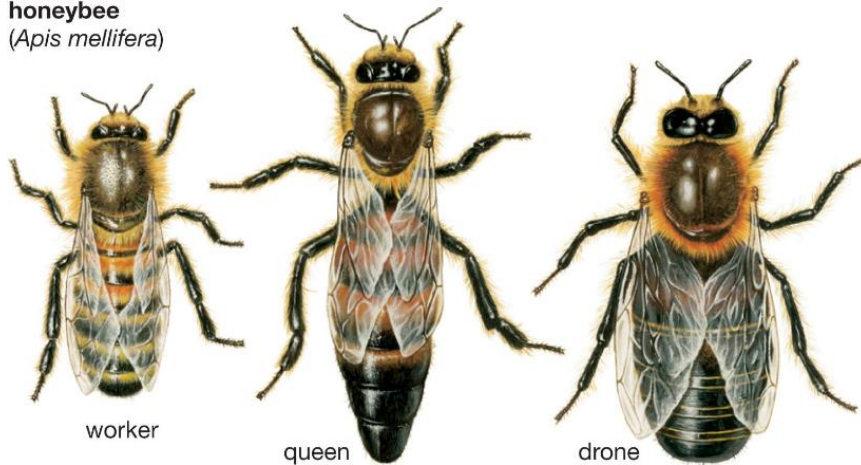
- Cleans the hive, other bees, and queen
- Feeds larvae, other bees, and queen
- Heats/cools the hive
- Guards the hive
- Collects resources



© 2012 Encyclopædia Britannica, Inc.

Queen

honeybee
(*Apis mellifera*)



worker

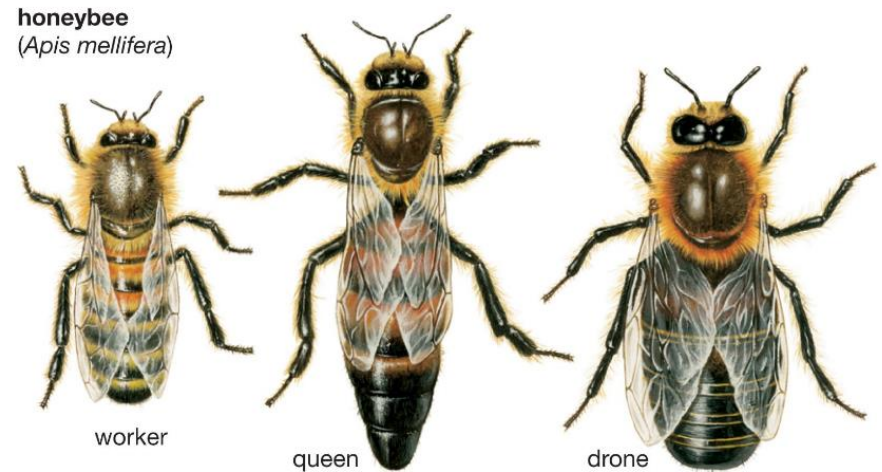
queen

drone

- Lays eggs
- Secretes pheromones that keep the colony together

Drone

- Don't make honey
- Don't pollinate flowers
- Only job is reproduction



© 2012 Encyclopædia Britannica, Inc.

Want to Get Started in Beekeeping?

- Find a local club
- Take a beginning beekeeping course
- Research
 - Books
 - Beware the internet
- Get in a beehive with an experienced beekeeper
- Find a mentor to help answer questions

What can you do to help
the bees?

Go easy on the pesticides



If you see a swarm, call a beekeeper!



Plant NATIVES!



Questions?

